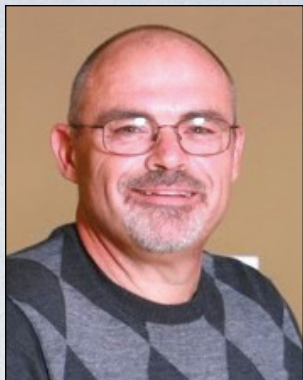




WALLA WALLA CATHOLIC SCHOOLS ANNUAL REPORT 2013–2014

SOARING TO EXCELLENCE



For over 150 years the Walla Walla Catholic Schools (WWCS) has followed the mission referred to by St. John Paul II. Many alumni have patterned their lives and careers for the good of society, by becoming priests, nuns, and educators, directors of non-profits, philanthropists and even politicians in local government. Some alumni have even chosen to teach in Catholic schools, and the WWCS's are fortunate to have eight alumni on staff and many more who volunteer.

During the last 150 years the WWCS system has seen good times and bad times. We have had high enrollment and declining enrollment. We've maintained strong operating budgets in years where finances were extremely tight. Through the ups and downs there is one common thread that has held the system together. That thread is you, our students, committed families, faculty and staff, benefactors, alumni, our endowment board and parishioners of our three parishes.

The 2013-2014 school year has seen continued involvement by the WWCS Board in the strategic planning process that began in the 2012-2013 year and a systematic review and update of all the policies of the WWCS. The Board's building and grounds committee has devoted a tremendous amount of time to identify capital improvement projects that need to be done and prioritize them based on liability exposure to the school. The summer of 2014 saw the replacement of bleachers on the football field at DeSales, with financial support from the Booster Club and the capital improvement fund, and the re-asphalting of the playground at Assumption. Other projects completed were new lighting in the Assumption building and repairs to the boiler system at DeSales. The upgrades to technology and the capital improvements that we have been able to accomplish would not have been possible without your generous financial support and donation of your time.

As we move forward the biggest challenge facing the WWCS is enrollment and the stabilization of tuition rates. In addition to tuition paid by our families, the budget depends upon five independent but

interrelated items, earnings from our endowment fund, our annual fund campaign, the WW Sausage Fest, the HOPE Gala, and contributions from our three parishes. If any of these fundraisers comes in lower than the amount we have budgeted, we have no other way to make up the differences other than increase tuition. Likewise, if enrollment drops, that means less tuition collected and a possible budget shortfall thus, an increase in tuition.

I encourage you to be as supportive of the Annual Fund Drive, Sausage Fest, and HOPE as you can to keep them successful. But the biggest favor I am going to ask from you is that you do all you can to help increase the enrollment at the WWCS's. Grandparents please encourage your children to send your grandchildren, current families talk to your friends and family to at least consider the WWCS and even visit with Lynne Kuntz or John Lesko about the advantages of a WWCS education. Finally, parents who are not sending their children, please prayerfully consider the WWCS and the benefits it can provide to you and your children.

In closing, I am confident that with your help we will be able to "Soar to Excellence" as we move the WWCS forward and make it a better educational and faith based experience for the children enrolled.

May God Bless You and Your Family,
Daniel J. Tompkins, President
Walla Walla Catholic Schools

**"THE MISSION OF THE
CATHOLIC SCHOOL IS THE
INTEGRAL FORMATION OF
STUDENTS, SO THAT THEY
MAY BE TRUE TO THEIR
CONDITION AS CHRIST'S
DISCIPLES AND AS SUCH
WORK EFFECTIVELY FOR
THE EVANGELIZATION
OF CULTURE AND FOR
THE COMMON GOOD
OF SOCIETY."**

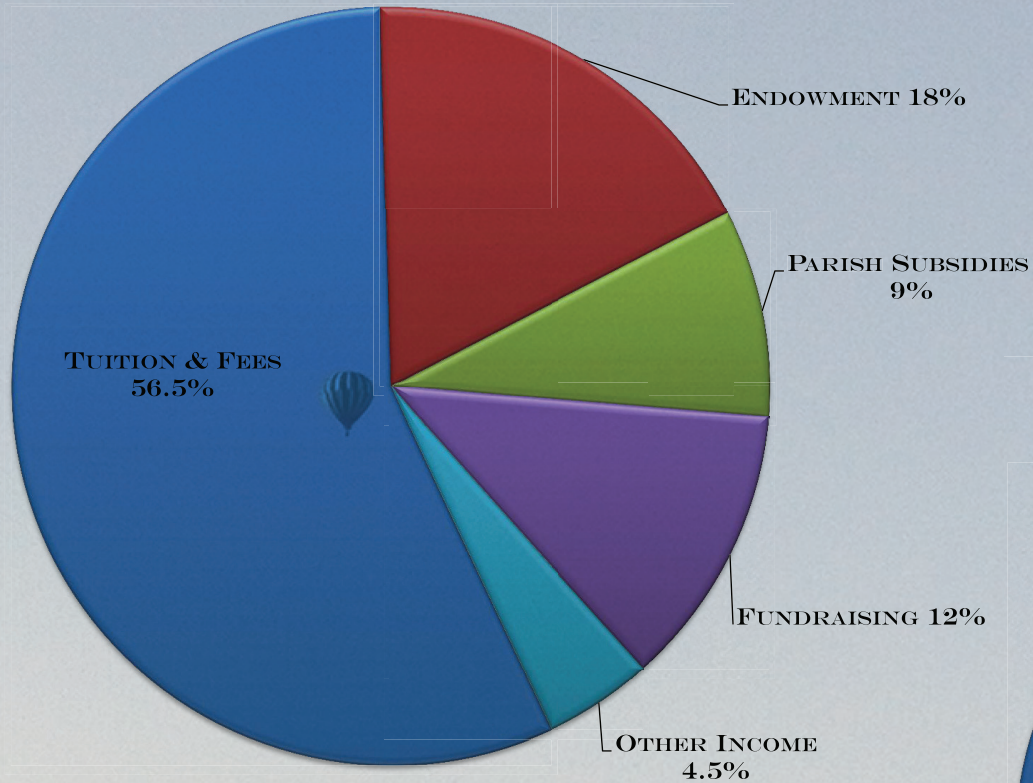
—ST. JOHN PAUL II



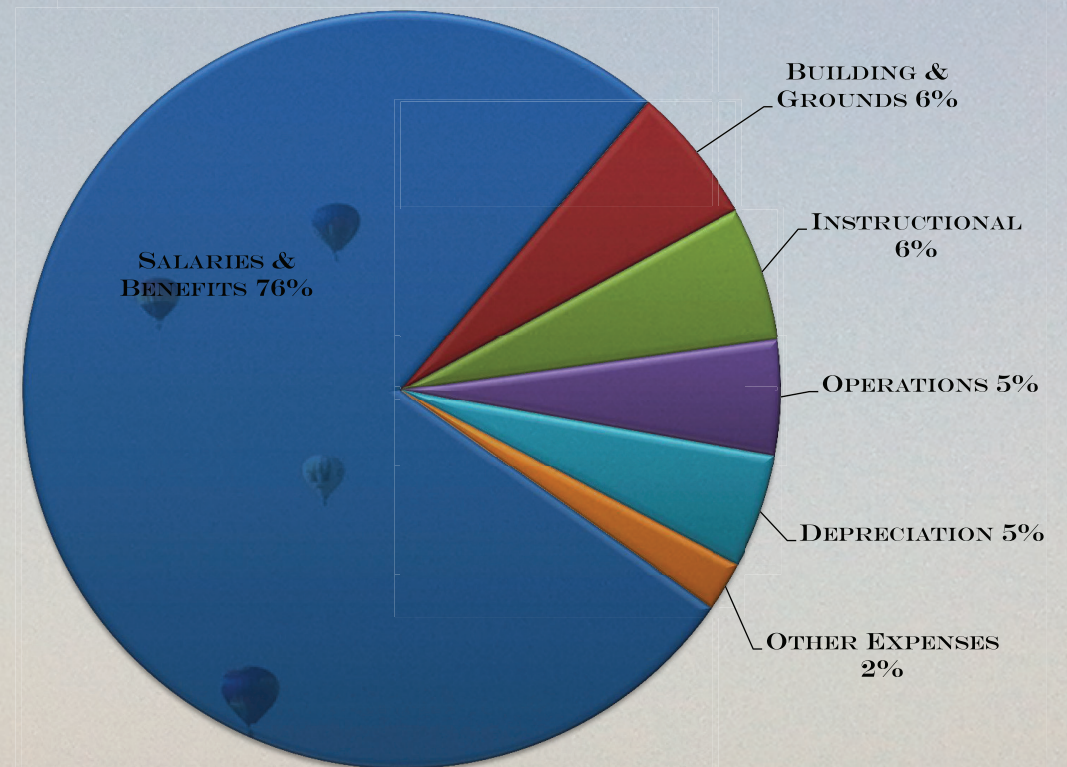
WHERE EVERY STUDENT IS NEEDED AND EVERY STUDENT IS IMPORTANT.

FISCAL YEAR 2013-2014

REVENUE \$2,776,148.19



EXPENSES \$2,755,588.04



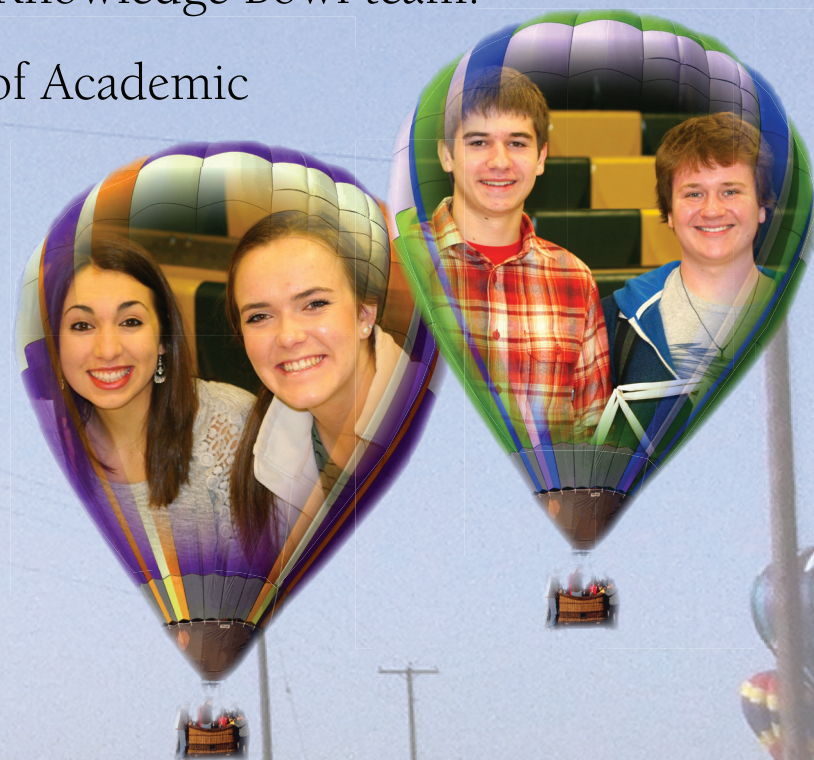
WALLA WALLA CATHOLIC SCHOOLS ACADEMIC

- For the past 13 years, DeSales has graduated 100% of our students.
- Emphasis on community service grades 6-12.
- Development and implementation of Rapid Responder Program.
- The ELC partnered with Early Achievers to obtain the highest quality rating in childcare and preschool.
- SCRIP Program raised \$25,000 for WWCS operating budget.
- Assumption and DeSales National Honor Societies cooperated in sending 191 handmade Valentines and Thank You notes to veterans locally and abroad and 11 cases of supplies to soldiers serving abroad.
- The ELC offered smaller preschool classes with more bilingual curriculum.
- Annual spiritual retreats, grades K-12.
- Grades K-7 participated in the S.A.M (Safety Always Matters) program.



MILESTONES AND ACHIEVEMENTS FOR 2013-2014

- \$994,152 at last count earned in scholarship money by the class of 2014.
- 64% of the graduates of the class of 2014 earned at least one scholarship to college.
- 2 students attending U.S. Military Academies from the class of 2013.
- 33 colleges & universities applied to by the 22 graduates of the class of 2014.
- 43 DeSales High School students participated on Knowledge Bowl team.
- All students K-7 involved in MAP (Measurement of Academic Progress) testing.
- The ELC continued to collaborate with parents and educators to bridge the readiness gap of our PRE K to K transitions.
- Development and implementation of student led goal conferences with parents and teachers.



THANK YOU TO OUR OUTGOING STAFF & FACULTY

It is with great gratitude we thank those individuals who left Walla Walla Catholic Schools the past year after serving our school community.

Michelle Baldwin

Michelle Baldwin served as an English teacher at DeSales High School. She inspired students to work to their potential in all that they do. Michelle began working for Walla Walla Catholic Schools in 1997 and resigned in June 2014 to move with her family to Jackson, Alabama.

Father David Kuttner

Father David Kuttner served as pastor at Walla Walla Catholic schools from 2013-14. He quickly developed relationships with the young adults at DeSales. In July 2014 he became Spiritual Director at Immaculate Heart Retreat Center in Spokane.

Stephanie Mayer

Stephanie Mayer served as librarian at Assumption School from 2012-2014. She enjoyed watching students develop their love of reading while learning about topics that interested them. Stephanie resigned in June 2014 to pursue other interests.

Anna Taylor

Anna Taylor taught Physical Education at Assumption School from 2012-2014. She encouraged students to explore various aspects of physical movement to keep their bodies healthy. She also served as the Athletic Trainer for Walla Walla Catholic Schools. Anna resigned in July 2014 to accept a position at Walla Walla Community College.

The Walla Walla Catholic Schools is proud to have had these individuals as part of the WWCS community. We thank them for their service and wish them the best in their future endeavors.

THE EARLY LEARNING CENTER

By Catherine Wolpert, Director

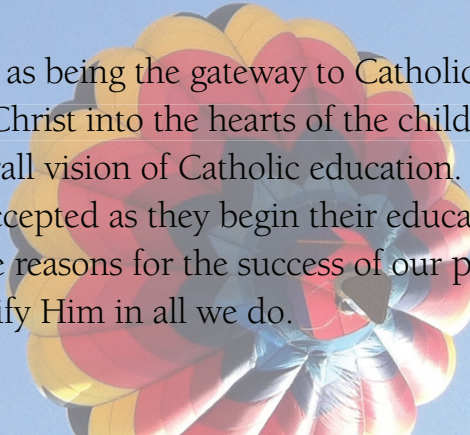
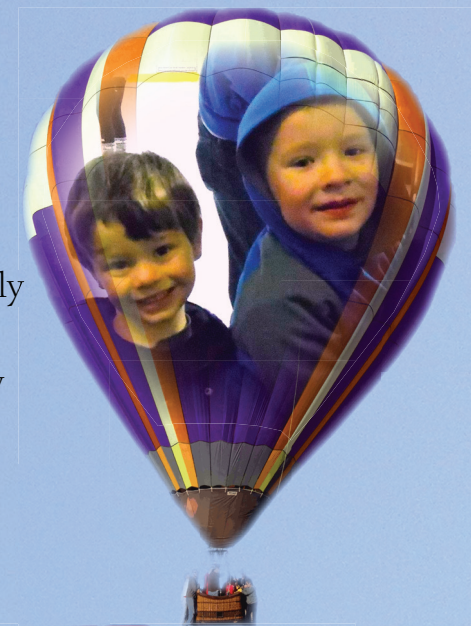


This year at the ELC was a year of growth and change. We are continuing to see the positive impact of smaller classes with greater choices. Each child grows at their rate of development in a safe, warm and rich environment. This type of early learning success lays a foundation for life. We also are continuing to be part of Early Achievers. This is a quality rating and improvement system that allows us to reach a gold standard level. At this point there are very few participants within the valley as it is a difficult and tedious process. The research that supports all the changes only serves to benefit the success of our program and ultimately enhance the early learning experience for the children. There are five levels and we have reached the first two levels. The University of Washington will be here in the fall to rate our program for level 3.

We are continuing to develop transitional plans for all of our children who are heading to Kindergarten. We take part in the Walla Walla Valley Dinner and Dialogue. This venue profiles and connects all of the providers with the teachers. It has served to bridge the gap in the transition process. We now connect with every teacher who will receive one of our students.

We also have added components to our application packet to better understand the developmental needs of the child, highlight any concerns and get to know the child better. These new components are a developmental assessment and an All About Me paper. They will be kept in the portfolio and passed on in the transition process.

We consider ourselves as being the gateway to Catholic education. We love imparting the love of Christ into the hearts of the children and families we serve. This supports the overall vision of Catholic education. We love making each child feel warm and accepted as they begin their educational journey. The ability to bring Christ in to the classroom is one of the reasons for the success of our program. We pray for His blessing on our programs as we continue to glorify Him in all we do.



ASSUMPTION K-8 SCHOOL

By John Lesko, Principal



Growth and success soared during the 2013-14 school year. As a result of curriculum reviews and research by faculty and staff Professional Learning Communities, Assumption students learned how to identify individual learning goals, develop an action plan and present their progress to parents through student led conferences. In addition, capital improvements and increased access to upgraded technology had a measurable impact in the classroom. All efforts were reinforced through the tremendous commitment and support of our families and community.

Our immediate and long term vision for Assumption and WWCS will be through the work of the WWCS Board of Directors Strategic Plan. The Plan will embark our schools on course to again meet the needs of the Catholic School Community in Walla Walla for the future.

The focus of the Plan includes the following pillars:

- Provide a culture of excellence both academically and extracurricularly.
- Provide schools open to all who are committed to both our vision of education and support of our community.
- Position the WWCS to serve future generations.

Assumption School will also begin its self-evaluation through the Western Catholic Education Association (WCEA) Accreditation process during the 2014-2015 school year.

As we look toward the future of Assumption School we will continue to acknowledge the importance of individual gifts and efforts which collectively will help lead to new success and excellence for our school community and allow us to state with confidence the best days of Assumption are ahead of us. Please join me with your continued support of Assumption School and Walla Walla Catholic Schools as we soar to new excellence in our vision of Education for Life.



DeSales High School

By Lynne Kuntz, Principal



The summer of 2013 was a whirlwind of construction upgrades at DeSales. New windows and overhead lights were installed in the classrooms and offices, painting was completed in the hallways and exterior of the building, and locker doors were painted. These cosmetic upgrades have greatly improved the appearance of the school and have also increased the amount of natural light in the classrooms and improved energy efficiency. Considering her age, DeSales High School is looking quite stately. Upgrades and improvements will continue through 2014 in order to keep the building and grounds growing old gracefully.

In August, DeSales and WWCS welcomed its first class of international students. Three students from China immediately became immersed in the cultural, academic and social environment of DeSales and the community of Walla Walla.

We are grateful to those families who have agreed to parent these students in their home and heart. All three are planning to return to Walla Walla for a second year. DeSales will welcome one new international student in August 2014.

The pillars of the WWCS Strategic Plan will guide our direction and decision making over the next several years. Curriculum enhancements, upgraded technology and faith based activities will remain central to the focus of meeting the needs of our students and the community as we Soar to New Heights.

DeSales and WWCS will continue to provide a quality Education for Life for each student. We welcome guests in our schools and are grateful for the many blessings each individual provides. WWCS is healthy and thriving because of the tremendous commitment of time, resources and energy on the part of our community.



2013-2014 IRISH ATHLETIC HIGHLIGHTS

By Greg Fazzari, Athletic Director

Spring Golf

- Emily Baumgart, #1 in District, #1 in State.
- Boys Golf, #1 in District, #2 in State.
- Jarod Konen, #1 in District.
- Lucas Lyons #8 in state.
- Scott Kimball and Jarod Konen, #10 in state.

Softball

- DeSales takes #1 in league, #4 in state.

Baseball

- DeSales takes #1 in league, #2 in District, #1 in State

Track (Districts)

- The boys' 4x100 and 4x400 both claimed first place with identical teams of Dominic Kjeldgaard, Braden Kimball, Isaac Mata and Isaiah Scheel.
- The Irish girls' 4x100 and 4x200: Stacia Deal, Amy Elmenhurst, Brittany Lemons and Allison Wujek collected second-place finishes in each.
- In individual results, Allison Wujek, took first in the 100 hurdles and she also took second in the high jump with a clearance of 5 feet. Brittany Lemons took 3rd in the 200. Skylar Olson was 2nd in the shot put.

- On the boys side Dominic Kjeldgaard was 1st in the Javelin and finished 2nd in the 200. Sergio Pena finished 3rd in the 300 hurdles. Isaac Mata had a 2nd place finish in the 800. Juan Cortez was 3rd in the 3200. Isaiah Scheel finished 3rd in both the 100 and the Long Jump.

Track (State)

- State Track: Isacc Mata, 6th in State 800 m run.
- Alison Wujek, 3rd in 100 m hurdles, 8th in high jump.

Winter Girls Basketball

- 1st in League, 4th in State.

Cheerleaders

- Took a team of 12 to first ever competition.

Fall Football

- Team made it to the state tournament once again. Was beat in the first round by the eventual state champions.

Congratulations to all the athletes, their families, and the hard work done by the coaching staff of DeSales High School.



FINE ARTS: CREATIVELY SOARING

By Eric C. Rohde, Theatre Instructor



The past school year has seen a dramatic increase in the interest and activities of the Fine Arts departments at Walla Walla Catholic Schools. Between Assumption and DeSales, over 80% of our students are involved in some sort of Fine Arts program; some students electing to take a Fine Arts course every year of their enrollment.

At Assumption we have increased participation in all our the Fine Arts courses: Mr. Rohde's Drama class, Mr. Lynch's two Band classes, Ms. Thompson's Choir classes and Mrs. Hilbert's Art courses. The increased participation has allowed larger fall and spring Fine Arts performances for Choir, Band and Drama that is the culmination of the students hard work over each Semester.

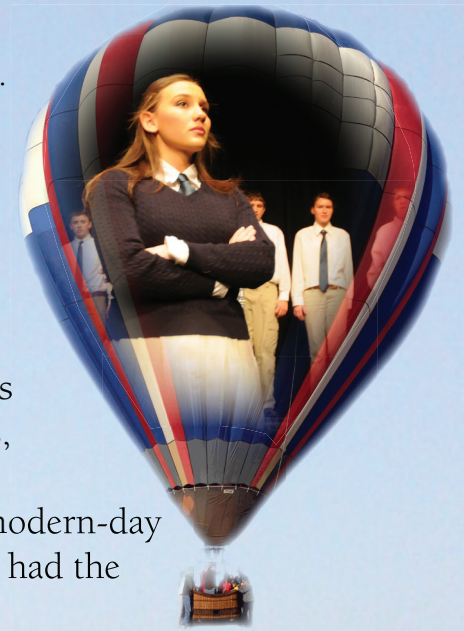
The Fine Arts courses at DeSales have also seen increased activity over the past year. Mr. Rohde's Drama class has worked on projects such as set design, acting, stage combat, special effects makeup, and dialects to name a few. The Drama class year end project again were the popular Student Directed One Act plays, showcased with Mr. Lynch's Band class. Our fall production was *Agatha Rex*, a comedy based on the Greek tragedy *Antigone* that took place in a modern-day Catholic High School. The play was well received and cast members even had the opportunity to hold discussions with the Playwright via Skype.



Mr. Lynch has continued to direct amazing musicians in his band class, instructing each student individually and as a group to develop their full musical talents. Mr. Lynch and the Band members performed a concert in the fall and spring and are also ever present at athletic events to play in support of our athletes. In Mrs. Hilbert's Art course, students create unique images and pieces that pertain to their skills while learning fundamentals of art as a whole.

Fine Arts courses need to be given to students for a variety of reasons. Most importantly, Fine Arts courses are taught at WWCS so that students become better people in their lives; Fine Arts teaches this and allows students to grow with their skills. Fine arts allows their creative ideas to "Soar to New Heights"; giving students the building blocks to develop their talents, confidence or speaking abilities to their full potential.

Fine Arts are an area that can be used in any aspect of a student's life. This is the basis for why we have Fine Arts at WWCS. We want to help students enjoy all of these things while learning teamwork, individualism, compassion and ultimately to have fun while learning.



SOARING TO EXCELLENCE...OR AT LEAST LEARNING TO STAY ALOFT

By Chris Carson, Class of 1991



When asked to write about how Walla Walla Catholic Schools helped me soar to excellence, I thought immediately back to what is a pretty typical test of one's K12 education: freshman year in college. More than twenty years ago, I sat down in the middle of a dimly lit lecture hall, excited for my first day of classes at Dartmouth College. The professor walked into the hall, and his first question, the first words of my first college lecture were: "How many of you have taken calculus before?"

All the students around me raised their hands giving me a moment of panic and a sudden urge to check that I wasn't in the wrong room—I'd registered for intro to calculus. Brother Frank and Mr. Lapke provided a superb math education, but AP courses like calculus weren't offered when I went to DeSales. If I wasn't already feeling anxiety at this first sentence uttered by my first Dartmouth professor, the second sentence definitely brought it on: "Good! Because we'll be moving very fast."

I walked out of the hall some hour or so later, with at least the first few pages of my binder paper filled with quick scrawls and my head spinning with my first ever twinge of math anxiety. Math had always been my "thing". I'd always dreamed of doing as well on the basketball court as I did on the math team (sorry Mr. Lesko, it was a dream I could never quite live up to). The first month of college only reinforced my feeling of anxiety—the grades on my first tests and papers were poor. I was suddenly confronted with the realization that I might not be cut out for this place, that I might not have what it takes to compete with these kids, in this elite prep school culture.

You might be reading this and wondering, "What happened to the perspective on soaring to excellence? This sounds like a description of how inadequately prepared you were for tough college courses...more aptly titled crash landing in failure!" Point taken—I should probably skip to the end of the story. I ended that first semester with A's and continued on this track to graduate with enough distinctions to make a parent proud, including some national awards. It was this jump—the leap from feeling like I was going to fail to graduating in the top one or two percent—this is what I'd attribute to my K-12 education. It gave me something more important than a feeling of soaring: it gave me the perseverance to fight like mad when I felt like I was going down.

As a public school teacher and a part-time college professor, I talk about higher education as one of our country's misunderstood education problems. Parents, policy makers, and educators spend a lot of time and energy thinking about getting kids into college, and not enough time making sure they have both the academic skills and the "intangibles" needed to successfully navigate college: resiliency, decision making skills, and study discipline. I wasn't ill prepared: Mrs. Sutlick and Mr. Poole got me ready to write and analyze, Mr. Michels got me ready to actively engage in lectures, and Mr. Simmons laid down a solid chemistry understanding.

More importantly, Walla Walla Catholic Schools teachers helped to instill some "intangibles" that helped me push harder when things got tough. Maybe credit is due to the years-long relationships with teachers like Mrs. Jones, Mrs. Peterson, Mr. Michels and Mr. Chubb- teachers who told me when I screwed up but still conveyed a sense of high expectations. Maybe the intangibles came from having dedicated teachers who taught and led extra curriculars, teachers who pushed me to develop in multiple ways, helping me learn balance from juggling music, sports, drama, leadership, and homework. Every teacher deserves some credit in helping to develop the resiliency I'd need to deal with stress and initial failure.

In terms of excellence, everything I do continues to feel more like struggling to stay aloft than soaring like an eagle. I will say that I have tried to live up to the examples of excellence I saw in my teachers: they were smart people who answered the call to serve us, with patience and humility. Their example helped me choose a career as a teacher. And if there is anything my own kids are missing in their public education, it is a constant reminder of the powerful act of humble service to others, the example of a master bending low to wash a servant's foot. What I want for my kids, what I want the students in my classroom, what I want for every student is the same gift I got from Walla Walla Catholic Schools: not an elitist or exclusive education, segregated from "different" kids, but an education that challenges them in every way possible to develop the kind of

11 resilience needed for success. Maybe they'll soar gracefully, with ease, but I'll settle for seeing kids fight like mad to stay aloft.

THE WALLA WALLA CATHOLIC SCHOOLS ENDOWMENT ASSOCIATION

Dear Alumni, Friends and Supporters,

For the past thirty-six years, the Walla Walla Catholic Schools Endowment has been accumulating a permanent fund through wills and bequests as well as gifts of securities, cash, mutual funds and land. Each year a grant is made to the Walla Walla Catholic Schools from the Endowment to underwrite operations and provide scholarship assistance to needy students. In reality, it is not the Endowment giving a helping hand but the countless donors whose generosity has made the Endowment's annual support possible.

Tuition only covers two-thirds of the cost of a Catholic education. So, no student or their family pays the full cost of an Assumption or DeSales education. And, many students still need financial aid. According to the National Catholic Education Association, tuition in K-8 increased 69% over the last 10 years and 136% at the high school level. However, here in Walla Walla, the increases were 53% and 35%, respectively. Still, without the support and sacrifice of many of our donors, a Catholic education would simply be unaffordable to many of today's students.

Over the years, much progress has been made and today the Endowment has grown to nearly \$10 million dollars, a significant accomplishment. But the thirty-six year story of the Endowment is about a journey not the destination. We have made significant strides, about which we should all be very proud. But the goal of providing the Catholic Schools all the funding necessary is the goal to which we are still aspiring.

With the help of God and many generous donors, we may someday reach that goal. In the meantime we thank the many whose generosity has made all we do possible and ask those who have not yet helped to please consider doing so.

Sincerely,
Richard N. Heinzman
WWCS Endowment Association President



THE WALLA WALLA CATHOLIC SCHOOLS BOARD OF DIRECTORS

The past year was again a busy and very productive one for the Walla Walla Catholic Schools (WWCS). The culmination was the graduation of an outstanding group of seniors who possess the strength, faith, knowledge and will to be successful. We wish them all the best, and want them to know they will always be a part of the WWCS extended family.

The Board of Directors continued to make progress with our focus on growth and enrollment, providing a Catholic based education with an outstanding learning and growing environment. We are building a culture of academics, extracurricular excellence, and support to our community while positioning ourselves to serve future generations. Success in these areas is only possible with the dedication of the administration and staff, community support and the support of the parishes and diocese. It takes a tremendous amount of generosity on the part of volunteers and donors to be successful in these areas. I would like to express my deepest thanks to the many people who have contributed to the WWCS.

Both DeSales and Assumption schools continue to receive several capital improvements to the building and grounds, teaching materials and upgrades in technology through the combined cooperation of the Endowment Board, Momentum Campaign, Alumni Association, Booster Club and many volunteers.

Several members of the Board of Directors completed their terms this year and I would like to thank them for their tremendous contributions to the school system. These members included Crystal Wales, Keith Westphal and Mary Harri. This group has been particularly active in the school system and worked very hard to help us achieve our goals. They will be missed. With that said, I'm very excited that we have also added some new members this year and I'm sure they will be equally active and outstanding contributors. The new members are Claire Valente and DeSales graduate Alan Stanley.

The WWCS has a long and storied history as part of the Walla Walla community, and with the focus of this board and many others, we look forward to continuing our tradition of excellence.

Thank you all for your service and God bless,
Greg Graham
Chair, WWCS Board of Directors



In the 2013-2014 Annual Report, we celebrate the generosity of our many alumni and friends who have invested in Walla Walla Catholic Schools through their charitable giving during our last fiscal year (July 1, 2013 through June 30, 2014). If we have inadvertently omitted or misspelled names please advise the Office of Advancement by calling 509.525.3030.

A. Morell Wines
Abajian Motor Sales
Maple Leaf Ace
Hardware
Charles & Michele
Acock
Dawn Adams
Alder Family Dental
Megan & Jonathan
Alexander
Eugene & JoAnn
Aliverti
Michael & Kathleen
Allasina
Linda Allen
Ronald & Janet Allen
Josh & Dalari
Allington
Tim & Tina Allington
AMaurice Winery
Amavi Cellars
Marilyn Anderson
Gerald & Nancy
Anhorn, Jr.
Gerald & Janice
Anhorn, Sr.
Anonymous
Advanced Appraisal
Services
Judy Arbanas
Arby's
Ardor Cellars
Oscar & Veronica
Arellano

Alice Armour
Assumption Church
Women
Assumption Home &
School
Phil & Natalie Auth
Chad & Lisa Averill
Jim & Joyce Aylward
Ronald & Janice
Ayres
Bachtold's Christmas
Trees
Dan & Val Baffney
Tom & Jane Baffney
Delwyn & Susan
Baker
Baker Boyer Bank
Paul & Michelle
Baldwin
Mary Ann Balkenhol
Barry Balof & Claire
Valente
Max Barclay
James & Jeanette
Barrow
Tim & Kris Barry
Michael & Connie
Bart
Tyson & Kristin Basel
Basel Cellars Estate
Winery
Michael Bates
Rev. Reinard Beaver
Ken & Sandy Beck

Brian & Jan Beechie
Beehive Cut & Color
Bar
Bella Fortuna
Bob & Carol Bennett
Steve & Nona Benzel
Robert & Shannon
Bergevin
Betty's Preschool
Bob & Deborah Biagi
Margaret Smith
Bittrolff
Drew Bledsoe
Blue Mountain Cider
Company
Blue Mountain Vision
Clinic
Donald & Joann
Bocol
Sandra & Shaun
Borth
William Bouten
Margaret Brayko
Mike & Tammy
Breier
Bright's Candies
Christine Briskey
Joann Britain
Lori Brooks
Dan Brown
Eulon & Louise
Brown
Jake & Phyllis Brown

Michael & Rose
Brown
Brushes 'n Brix
Jim & Margaret
Buchan
Melinda Buckley
Jay & Lynn Buckley
Steve & Patricia
Bughi
Jim & Heidi Buratto
Greg & Susan Buratto
Steve Burdick &
Alycia Silver
Burger King
Eleanor Burgess
Pat Burrows
Mike & Marguerite
Busch
Butlers Carpet
Cleaning
Emilio & Carmela
Buttice
Byrnes Oil Co.
Beth Call
Laurine Campbell
Tom & Bonnie
Campbell
Caprio Cellars
August & Karen
Caryl
Antonio & Jennifer
Caso
David & Lou Ann
Casper
Castillo De Felician
Winery
Paul & Pam Castoldi
Rev. Thomas Caswell
Tim Caudill & Linda
Gunshefski
Charles Smith Wines

Craig & Jeane Chase
Chase Electric
Carla Christiansen
Jim & Lucy Chubb
Ed & Kelly Chvatal
Joe Chvatal, Jr.
Don & Teresa Clark
Donald & Rose Clark
Dwayne Clark
Carol Clarke
Class of 1960
Kellen & Nicole
Clemens
Margaret Coan
David & Connie
Cochran
Evelyn Cochran
Neal & Margaret
Cochran
Malia Colcord
Rich & Val Cole
Russ & Susie
Colombo
Columbia REA
Community Bank
Oral & Morina
Compson
Tim & Laurie Conley
Connection
Photography
Margaret Conner
Michelle Conner
Larry & Helen
Connors
Jeff Moeller
Construction
John Cook
Raymond & Judy
Cooper
David & Shawna
Corbett

Fr. Jeff Core
Shelley Coster
Cougar Crest Winery
Mark & Betze
Counsell
The Country Register
of Washington
Gary & Gina Cox
Ken & Sheryl Cox
Kim & Lisa Cox
Coffee Cravings
Gordon 'Doc' & June
Cresci
Robert & Bernadette
Crider
Estate of Virgil
Criscola
Rocco & Marcy
Criscola
James & Coleen
Crowley
Cugini's Italian
Import Market
John & Karen Cullen
Ted & Laura
Cummings
Cummins Athletic
Supply
Bishop Blase Cupich
Evaline Curry
Pete & Karen
Dahlquist
Marguerite Daltoso
Dama Wines
Don & Gail
Danielson
Elizabeth Davis Trust
Carol Dayton
Votendahl
St. Vincent de Paul
Bob & Veronica Deal

HONOR ROLL OF DONORS

Claudia Deccio	El Sombrero	Marie T. Fazzari	Carolyn Goodwin	Craig & Cathy	Rob & Kristine
Joey Deccio	Dundee Elementary	Rod & Kim Fazzari	Robert & Judith	Hamada	Holtzinger
Jeanne Deeringhoff	School	Tovah Fazzari	Goranson	James Hand	Larry & Sally Hooker
Angelo Della	Dominick & Pam Elia	Elton & Mary Fenno	Michael & Kara	Handmaid Cleaning	Doug & Gina Houser
DeSales Home And	Roy Elia	Barbara Ferraro	Gordon	Patricia Hanes	Chris & Robyn
School	Michael & Maureen	Helen Ferraro	Mike & Kelly Gorton	Pamela Hanger	Huether
Ryan & Marie Dickey	Elia	Greg & Terri Ferrel	Brian & Susan	James Hansen	Michael Humphreys
Paul & Helen	James & Beverly Ellis	Gary & Nancy	Gosline	Jeanette Hansen	Don & Alma
Didelius	Dale & Kathryn	Figgins	Rachel Gossard	Dan Hanson	Hunerlach
William & Kathleen	Elmenhurst	Figgins Family Wine	David & Connie	James & Mary Harri	Dave & Sandy Huse
Dobner	David & Jennifer	Estates	Goude	Mary Harris	Chris & Lisa Hyland
Margaret Dolan	Elmenhurst	Greg & Sue Fink	Greg & Gerianne	Frances Hart	Ice-Burg
Rita Donnelly	George & Sandi	Five Star Cellars	Graham	Mark & Kelli Haugen	Inland Cellular
Louis Donnelly IRR.	Elmenhurst	Elizabeth Flanagan	Pat & Amy Graham	Curtis & Joyce	InSync Fitness
Trust		Catholic Foundation	Gramercy Cellars	Hayunga	Integrity Design
Madonna Doocy	Norman & Pat	of Eastern WA	Mary Alice Granger	Dwayne & Janet	Nelson Irrigation
Doyle Electric	Elmenhurst	Mary Fowler	Dan & Jerri Grant	Headley	Leonard & Shirley
Larry Druffel Farms,	Kael Elsey	John & Natalie	Georgene Grant	James Healy & Ellen	Isaacs
Inc.	Mark & Diana Emry	Fredrickson	John & Patti Grant	Wolf	J & J Vintners
Brian & Andrea Duffy	WWCS Endowment	Chuck & Jeanie	Graphic Apparel	John & Tioni Healy	Jacky's Flowers
Gary & Mary Jo	Association	Fulton	Chris Grasso	Judy Heath	Dan & Aj Jacobson
Duncan	POWER Engineers	Frank & Marilyn	Mark & Margaret	Fred Hector	Charles & Laura
Gerard & Yvonne	Ensemble Cellars	Gaffrey	Graves	Dick & Karen	James
Duncan	Mary Garner Esary	Joe & Margaret	Graze Catering	Heinzman	Jim & Bobbie Janning
Mary Ellen Duncan	Trust	Gaffrey	Bob & Denise Greco	Larry & Mary Heisey	Larry & Cindy Jones
Tim & Patti Duncan	Jenny Escobar	Fred & Sally	Virginia & Douglas	Hellberg Farms	Mark & Christine
Dean Dunham	Rick & Jennifer Eskil	Gagliardi	Green	Scott & Rebecca	Jones
Dunham Cellars	Etchings Walla Walla	Chris & Angela	Phil & Michelle	Hendricks	Don Kaminski
Doug & Stacey	James & Jane Ewers	Garratt	Green	Don Herak	Jake & Jane
Dunham	Lorraine Eyraud	Jeff & Mary Claire	Robert Greene &	Rita Hermann	Kaminsky
Brent & Juli Dunn	Falkenberg's Jewelers	Gegen	Teresa Kinsfather	Herring Funeral	Kent Kavanaugh
Karen Dunn	Margaret Fanciullo	Jan Gehlhausen	Art & Norma Griff	Home	Lee Keene & Theresa
Alvaro & Maria	Marlene Farley	Gesa Credit Union	Jason Grove	Betty Hicks	DiPasquale
Duran	Farm Credit Union	Gifford Hirlinger	Letha Grubb	Ron & Beth Higgins	Carolyn Kelly
Courtney Durkee	Kathy Farrens	Winery	Emilio & Pauline	Jeffrey & Kathryn Hill	Kip & Tami Kelly
Robert & Esther	Dennis Fazzari	Boeing Gift Matching	Guglielmelli, Jr.	Rodney & Andrea	Thomas & Anita
Dutton	Ed & Margaret	Allan Gillespie &	Eric & Ruthann	Hitchcock	Kemmy
Animal Clinic East	Fazzari	Kristal Hassler	Haider	Aaron & Jaci Hoeft	JP & Elaine Kent
Bowe Ebding	Fazzari's Finest	Irene Gleason	Terry & Maureen	Alysann Hohnstein	Virginia Kent
Edward Jones	Gregory & Susan	Brett & Melissa	Hall	Jeff & Megan	Kerloo Cellars
David Eggers	Fazzari	Gomsrud		Holbrook	Father Pat Kerst

HONOR ROLL OF DONORS



Key Technology	Charles & Cathy	John & Rosalie Lesko	Michael J. & Joan	Roy & Linda Martin	Midnight Oil Soap
Chris & Teresa Keyes	Konen	Mike & Alane Levens	Lyons	Eugene & Teresa	Company
Jenny Kezele	David & Patty Konen	David Lincoln	Mike Lyons	Martin	Kevin & Cathy
Larry & Nancy	Konkrete Industries,	Mark & Kathy	Monica Lyons	Dominic & Kathy	Miedema
Kezele	Inc.	Lindgren	Tim & Geri Lyons	Martuscelli	Misbehaven Spa &
Fred & Gale Kimball	Kontos Cellars	Little Theatre of WW	William & Marilyn	Agnes Mason	Salon
Sloan Kimball	Jennifer Kontos	Lloyd's Inc.	Lyons	Joseph M. Mason	Andy Moberg
Todd & Sandra	Mark & Gennine	Bud Locati	William Lyons & Son	Helen Mason, SP	Richard & Juliann
Kimball	Koopman	Frank Locati	Frank & Tonya Lyons	Duane & Anne May	Moeller
Wendy Kimball	Carol Kope	Loui Locati	Gerald & Danelle	Rose Anne McClellan	Dale & Elaine
Eric Kimball	Ryan & Wendi	Patricia Locati	Maccarone	Erik & Bryony	Montgomery
Jordan Kirk Royal	Kregger	Ray & Lila Locati	Dwight Maddess	McCollaugh	Jill Montgomery
Adolf & Lorraine	Simon & Linda Kula	Robert & Claudine	Tom & Sandi Madsen	Bob & Sandy McCoy	Mary Moore
Klein	Lynne Kuntz	Locati	Walt Madson &	Roger McDowell	Robert & Kathy
Bernard & Colleen	Virginia Spanish	Vince Locati	Robyn Phillips	Jack McGillis	Moore
Klein	Kupfer	Locati Cellars	Madson	K. Sean McGree	Doug Moramarco
Debbie	Duane & Stacey	Dean & Betty	Laurie Magnaghi	Mary McGreevy,	Mike & Jan
Kleinhesselink	Kutsch	Lodmell	Rick & Joyce	SSND	Moramarco
Bob & Nancy Klicker	L & G True Value	D. Joel & Colette	Magnaghi	The McGregor Co.	Peter & Julie
Kirk & Nancy Klicker	Joseph & Kathy	Loiacono	Magnaghi Hauling	Pat McMahan	Moramarco
Kraig & Charlotte	Landoni	D. Michael & Vicki	Service	Deanna McPherson	Nicolo & Michelle
Klicker	Dennis Lane & April	Loney	Loyd & Virginia	Sister Alexis	Moramarco
Mark & Lisa Klicker	Emry	Agnes Long	Mahan	Melancon	Heartland Mortgage
Maryalis Klicker	Larry & Joan Lane	Dave & Theresa	Jeff & Donna Mahan	Michael Mele	Steven Moss
Klicker Berries And	Raymond & Joetta	Loudermilk	Matt & Lita Mahan	Tim & Heidi Meliah	Larry & Judith
Antiques	Lane	John & Pat Lucarelli	Gerald Maher	Pat Meliah	Mulkerin
Tim & Jill Klinefelter	Linda Lang	Tony & Kelly	Patrick & Gloria	Richard & Elizabeth	My Grandmother's
John & Sherri	Leo & Aggi Lapke	Lucarelli	Maher, Sr.	Kay Mello	Garden
Klitzke	CliftonLarsonAllen,	Greg Lutcher &	Nancy Malinoski	Gloria Mendiola	Jim & Marilyn Nagle
Kim Kmetz	LLP	Susanna Ingersoll-	Liz Mango	Gustavo & Consuelo	Napa Auto Parts
Linden & Ruth	Wayne Larson	Lutcher	Denise Mann	Meza	Wayne & Kathy
Knapp	Insurance	Connie Lux	Gilbert & Shirley	M-F Drive-in Theatre,	Narum
Knights of Columbus	Kathleen Pautler	Dan & Kathy Lynch	Manuel	LLC	Nazareth Guild
#766	Laubach	Jessica Lynch	Janet Manuel	James & Claudia	Timothy & Sarah
Everett Knudson	Theresa Laurella	Brian Lyons	Julia Manuel	Michalak	Neely
Konen Rock	Ed & Carrine Leahy	Gerald Lyons &	Lorraine Manuel	George & Dolores	Edwin & Sarah
Products, Inc.	L'Ecole No 41	Rosanne Schneller	Rudolph Manuel	Michel	Nelson
Lorraine Konen	Laura Lee	Jack & Kathleen	Marcus Whitman	Keith & Brenda	Gailord & Jean
Barbara Konen Hair	Michele Leifheit	Lyons	Hotel & Conference	Michels	Nelson
Laura Konen Lee	Leonetti Cellars	Jim & Stephanie	Center	Mike & Janene	Guy Nelson
	Leo's Photography	Lyons	Mark Ryan Winery	Michels	Joseph Nelson

HONOR ROLL OF DONORS

Rex & Diana Ness
New York Store
Alicia Kay Newman
Greg & Alicia Nibler
Shirley Nibler
Wish Northwest
O'Brien Motors
Odem Corporation
Oil Can Henry's
Ojcius Lawn Care
Dan Oliver
Nydia Oliver
Richard & Mary
Olson
Jim O'Rourke
James & Kathleen
Owsley
Bill & Janie Pancake
Daniel & Tana Park
Paul Richardson
Agency
Darryl & Judy
Paulsen
Kay Paulsen
Dale & Verna Peck
Pendleton Round Up
Pepper Bridge Winery
Jim Peterson
Tim & Dollyjean
Pettyjohn
Kurt Phillips
Jack & Connie Pinza
Pioneer Family
Dentistry
Dennis & Sharon
Poffenroth
Raymond & Fern
Pohs
Albert & Alice
Pontarolo

Steve & Regina
Pontarolo
Bob Ponti
Raymond & Amber
Grant Pope
Erma Pritcher
Professional Window
Services
Providence St Mary
Medical Center
Anthony & Becky
Pugliese
Genida Purcell
Pure Design
Troy & Susan Queen
David Rahn
Harold & Jeanine
Rahn
Ralph & Mike's
Stella Ramsey
Ranch & Home
Michael & Cynthia
Rasch
Raven Outfitters
Linda Raymer
Richard & Henriette
Raymer
Dennis & Laura Rea
Nathan & Emily Rea
Red Monkey
Downtown Lounge
Red Lion River Inn
Red Monkey Lounge
Steve & Marianne
Reed
Reese Baffney
Grossman & Frol
Ron & Suzanne Reid
Norman & Mary Ann
Reinhardt
Sandy Reppe

Virgil & Sandra
Reynolds
Maxine Rice
Brian & Susan
Richard
Ryan & Cindy
Richard
Scott Richard
Tom & Christine
Richard
Josh Richard
Bill & Shirley
Richards
Glen & Carol
Richards
Kelly & Colette
Richman
Constance Riordan
Edward Rizzuti
Gary & LeeAnn
Rizzuti
Dan & Jacquie Roach
Andy & Stephanie
Robideaux
Justin & Karen
Robison
Margot Robison
Peter & Janet Robison
Eduardo & Veronica
Rodriguez
Hector & Maria
Rodriguez
Eric & Angela Rohde
Rohde Appraisal
Service
John Ropella
Donald & Margaret
Roser
Dan & Janet Rowe
Ray & Peggy Roy

Gary & Linda
Ruggeri
Kathy Ruggeri
Steve & Kathy
Ruthven
Glen & Kathy Sams
Marybelle Savage
Steven & Sandra
Schaefer
Duane & Jo Schafer
Valentine Schaff
Joe & Christine
Schamer
Catherine Schellin
Robert & Barbara
Schille
David & Polly
Schmitz
Kincaid Schmitz
Edward Schneider
& Helen Logan-
Schneider
Lowell & Virginia
Schneider
Carol Schneller-
Lundwall
James Schuster
William P & Lisa L
Sharkey
Tom & Nancy Sheer
Mark & Debbie
Sherry
Brenda Shields
Sign Designs
Silverwood Theme
Park
Doug Simmons
Ski Bluewood
Rev. Charles Skok
Sleight Of Hand
Cellars

Ed & Deanna Smith
Elizabeth Smith
Howard & Dona Jean
Smith
Total Comfort
Solutions
Sour Grape
South Fork Grill
Brian Southwick
Angelina Spanish
Tina & Katie Sparks
Dick & Loretta Spiess
Mike & Lorie Spiess
Rick & Renee Spiess
Spring Valley
Vineyard
Jon & Ann St. Marie
St. Patrick's Parish
St. Vincent's Quilters
Gerald & Peggy
Stalder
Rick & Shirley
Standard
Joe & Lisa Steele
Dave & Lanna
Stemmer
Steve's Archery &
Fishing Shop
Jeffrey & Lauren
Stiles
Lauren Stiles
Stone Hut Bar And
Grill
Stone Hut
William & Linda
Stonecipher
J. L. Stubblefield
Trust
Richard & Mary
Sundberg
Super 1 Foods

Al & Cheryl Sutlick
Tony Sutlick
Ferd & Libby
Swenson
T. Maccarone's
Frederick Tadrowski
& Julie Berggren
Tallman's
Tamarack Cellars
Leonard Taruscio
Nancy Tavelli
Aaron Taylor &
Connie Taylor-
Randall
Tertulia Cellars
The Mom's Network
The Sweet Putt
Joe Thomas
Thompson &
Kreitzberg
Sarah Thomson
John R Tombari
Charles Tompkins
Dan & Annette
Tompkins
Helen Tompkins
Mary Grant
Tompkins
Tompkins Appliance
Service
Tony's Sub Shop
David Torretta
Dorothy Torretta
Joe & Mary Towner
Cal & Lorraine Toye
Clifford & Virginia
Trout
Margot Turner
Lorraine Upmeyer
Va Piano Vineyards
Valley Vision Clinic

Steve & Rozanne Van
Ausdle
James & Regina
Vandersloot
Dave & Tricia Vargas
Tompkins Vargas &
Assoc.
David Venneri
Douglas & Jodi
Venneri
Richard Venneri
Russ Vera & Diana
Cearley-Vera
Rancho Villa, Inc
Jim Vinti
Jerry & Carol
Votendahl
Casey & Marissa
Waddell
Bud & Patricia
Waggoner
Maddie Wahl
Pat & Lori Wahl
John & Tessie Walker
Rose Anne Walker
Walla Walla Union
Bulletin
Walla Walla County
Republicans
Walla Walla Country
Club
Walla Walla Electric
Walla Walla Farmers
Co-op
Walla Walla Gun
Club
Walla Walla Vintners
Walla Walla YMCA
Walla Walla's Harvest
Foods
Waters Winery

Tom & Sydnee
Watson Sr.
Kenneth B. Wells
Trust
Keith & Jerri
Westphal
Rich Westphal
Del & Kay White
Gordon & Sandi
Wicher
Carrie Wiencken
Bob & Deanna
Williams
David & Joann
Williams
Shawn & Debbie
Williams
Tom & Penelope
Williams
Williams Hudson Bay
Organic Farms
Teresa Williamson
Stephanie Willis
Benjamin Wolfram
Scott & Laurie
Wolfram
Duane & Mary
Wollmuth
Catherine Wolpert
Sylvia Wolters
Hank & Catherine
Worden
Andrea Wujek
Joe & Donna Wujek
WWCC Rodeo Team
Justin & Elizabeth
Wylie
Richard & Patty
Wylie
Zag Shop
Bob & Jill Zagelow

Jerry & Kathryn Zahl
Kevin & Julie Zander
McDonald Zaring,
Ins.
Louis & Lenore Zaro
Anne Marie Zell
Schwerin
Ike & Rochelle
Zwiesler

Memorial Gift Honorees

Sydney Anderson
Jeff Anspach
Pat Anspach
Dr. William "Bill"
Bayer
Gary Beagles
Michael Brown
David Burgess
Craig Campbell
Henry Paul Clemen
Mary Ann Coffey
Pansy Cook
Virgil Criscola
Josephine Locati
Crumpacker
Barbara Cunningham
Ben Daltoso
Bill Davis
Roger Eyraud
Jeffrey Louis Ford
Larry Gehlhausen
Clara Harding
Joan Heitstuman

Mike Humphreys
William B. Johnson
Jack Jones
John Kent
Mary Ellen Keyes
Susie Keyes
Rich Klicker
Ray Lane
Sam Laurella
John Lyons
Marilyn Lyons
Edward Martin
Gregory Martuscelli
Frances Marum
Sister Mary McGreevy
Gerald Mosman
Bill Pancake, Jr.
Carol Peterson
Bill Pontarolo
Marilyn Richard
Dr. Robert Ruggeri
Susan Savage
Linda Schuster
Robert Schwerin
James Spence
Alice Stanley
Charles "Joe"
Tompkins
Al Torretta
Robert & Irene
Weller
Adeline Westphal

Walla Walla Catholic Schools Scholarships

Don & Jan Angotti
Memorial
Scholarship
Anhorn Family
Scholarship
Assumption Home &
School Scholarship
Tyler Baffney
Memorial
Scholarship
Virgil & Dorothy
Criscola Scholarship
Mark Daltoso
Memorial
Scholarship
DeSales Girl League
Scholarship
DeSales Home &
School Scholarship
Margaret M. Graves
Scholarship
Jerald & Margaret
Kelly Endowment
Scholarship
Richard Klicker
Memorial
Scholarship
Robert & Alice
Lux Memorial
Scholarship
Gerry Lyons
Lemondrop
Scholarship

James C. & Elizabeth
F. Lyons Memorial
Scholarship Fund
Frank Magnaghi
Memorial
Scholarship
Stephen Mayberry
Scholarship
Tony & Jeanne
Moramarco
Scholarship
Bill Roach
Scholarship
Saint Vincent De Paul
Scholarship
Stubblefield/
Leahy Memorial
Scholarship
Duane Tompkins
Memorial
Scholarship
Peter Venneri
Youth Scholarship
Walla Walla
Catholic Schools
Alumni Scholarship
Ken Wicher
Memorial
Scholarship
Williams Family
Trust Scholarship
Wolf Healy
Scholarship

HONOR ROLL OF DONORS

THE CLASS OF 2014



Claire Conley
Luis Contreras
Juan Cortez
Mary Crowley

Adam Eskil
Darryl Galloway
Christal Hall
Samantha Hamilton

Andrew Hayunga
Brianna James
Matthew Jubb
Braden Kimball
Jerod Konen

Jean-Emile Leconte II
Ashlyn Lyons
Benjamin Miedema
Sergio Peña
Elizabeth Ruthven

Renée Roach
Adam Skaarup
Andrea Wheeler
Allison Wujek

Thank you to those who helped put together this Annual Report
Design, assembly & layout: Eric Rohde | Lead Editor: Amy Graham

Contributors:

Suzan Daltoso, Greg Fazzari, Greg Graham, Richard Heinzman, Lynne Kuntz, John Lesko, Brenda Shields, Cheryl Sutlick, Dan Tompkins and Catherine Wolpert. Printing by John Sasser @ Integrity Printing

www.thewwcs.com

WALLA WALLA CATHOLIC SCHOOLS



Walla Walla Catholic Schools
919 E. SUMACH ST.
WALLA WALLA, WA 99362

Non-Profit Org.
U.S. Postage
PAID
99324
Permit #44